

**LET'S  
WALK TO  
SCHOOL**

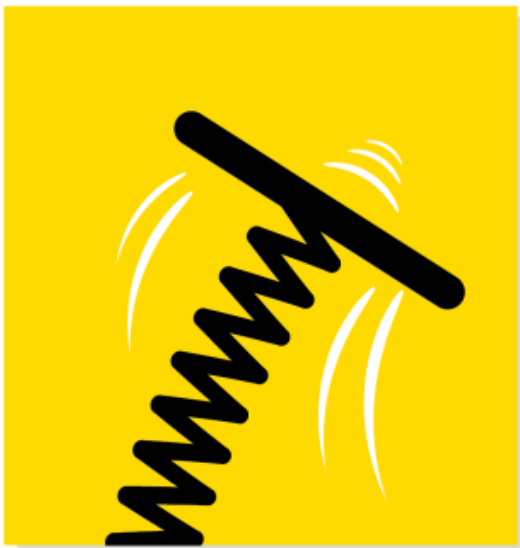
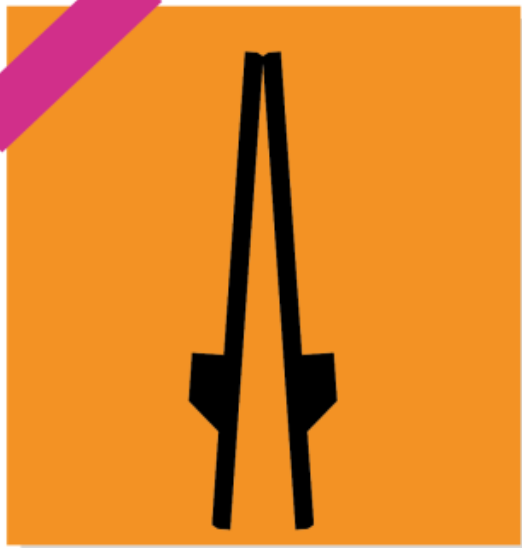
**Welcome**

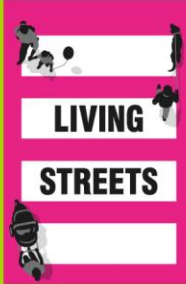


**Let's WALK  
TO SCHOOL**



# HOW DID YOU GET TO SCHOOL TODAY?





LET'S  
WALK TO  
SCHOOL

What we'll talk about  
in today's assembly:

- **What is air pollution?**
- **Why is it a problem around your school?**
- **What you can do to help!**





**LET'S  
WALK TO  
SCHOOL**

# **Air pollution – what is it?**

## **The harmful stuff**

**When a car engine is switched on, it is emitting harmful gases (emissions) into the air we breathe.**





LET'S  
WALK TO  
SCHOOL

# Air pollution – what is it?

## The harmful stuff

**Nitrogen dioxide**

**Carbon monoxide**

**Particulate matter.**





**LET'S  
WALK TO  
SCHOOL**

# ***Why is air pollution a problem around your school?***

- **Lots of slow moving traffic or parked cars with their engines running outside your school causes air pollution.**
- **Air pollution can damage our health.**

Road transport is the biggest contributor to air pollution in the UK!



LET'S  
WALK TO  
SCHOOL

# Engine idling

- This is when drivers leave their engines on when they are not moving.
- Engine idling often happens at school run times.
- When drivers leave their engines running (engine idling) outside your school this causes more air pollution.

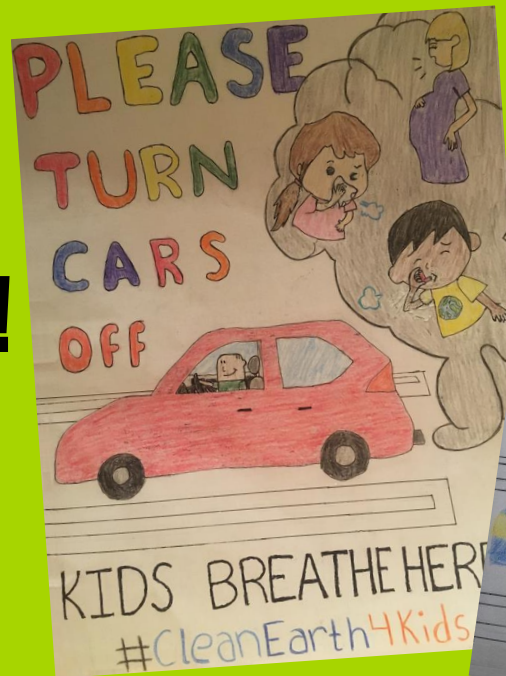


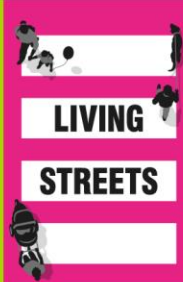
**Did you know?**

A car that has its engine on (idling) uses twice as much fuel as a car driving along!

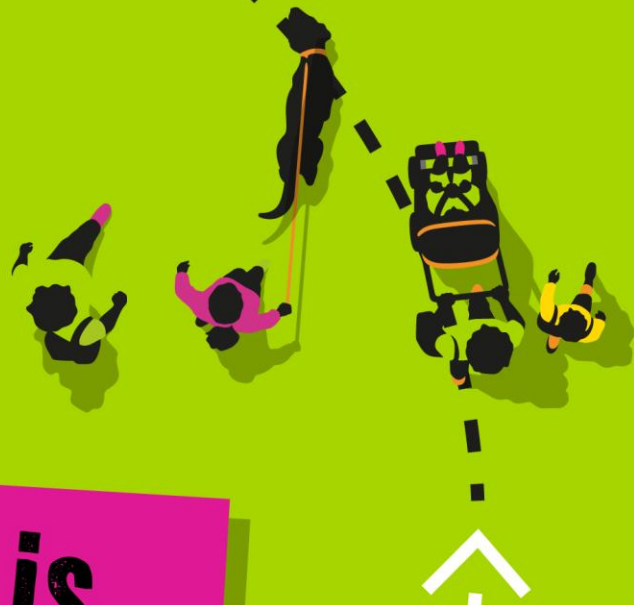
# Can you make a poster to stop engine idling?

- Make it bright
- Make it clear.
- Make it stand out!





LET'S  
WALK TO  
SCHOOL



*The good news is  
it's not too late to  
turn things around*



LET'S  
WALK TO  
SCHOOL

**You have increased the  
number of children walking  
to school**



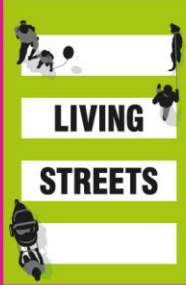


**LET'S  
WALK TO  
SCHOOL**

# What do you think?



**When you come to school –  
what is the least polluting way  
for you to travel?**



LET'S  
WALK TO  
SCHOOL

# *Least polluting ways to get to school*



- **Walk to School**
- **Park and Stride. Park away from the school and turn the car engine off**
- **Cycling and scooting**



LET'S  
WALK TO  
SCHOOL

Walking =  
less pollution





LET'S  
WALK TO  
SCHOOL

# Reasons to walk to school

*Fewer cars at the  
school gates*





LET'S  
WALK TO  
SCHOOL

# **Top 3 important steps**

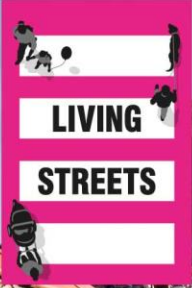
**To keep you and the air  
around you healthy:**

- 1 Walk to School**
- 2 Park and Stride**
- 3 Car engines – switch them off!**

# Make your own 'pollution catcher'!

1. Spread a layer of petroleum jelly onto a square of card stock.
2. Hang the square outside where you want to test for pollution.
3. After a few days, use a magnifying glass to see all the air pollution particles.





LIVING  
STREETS

LET'S  
WALK TO  
SCHOOL



LIVING  
STREETS  
LET'S WALK TO  
SCHOOL

WE WALK  
TO  
SCHOOL

Join the  
WOW - the year  
walk to school

