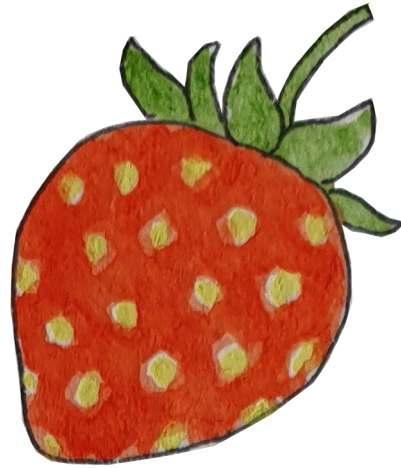




“s s s ...  
squishy  
strawberry”

s



SUPERSONIC  
Phonic Friends



“a a a ...  
amazing  
apple”

a



SUPERSONIC  
Phonic Friends



“t t t ...  
terrific tiger”

t



SUPERSONIC  
Phonic Friends



“p p p ...  
perfect panda”

p

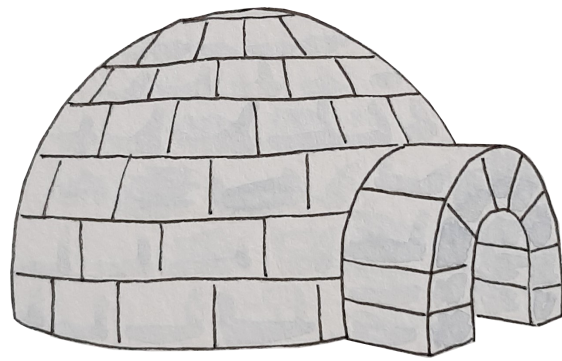


SUPERSONIC  
Phonic Friends



"i i i  
in the  
igloo"

i



SUPERSONIC  
Phonic Friends



“n n n ...  
naughty nose”

n



SUPERSONIC  
Phonic Friends



"m m m ...  
marvellous  
mouse"

m



SUPERSONIC  
Phonic Friends



“d d d ...  
dangerous  
digger”

d



SUPERSONIC  
Phonic Friends



“g g g ...  
groovy  
glasses”

g

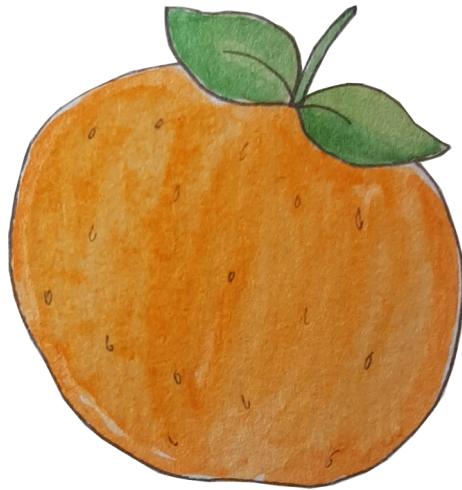


SUPERSONIC  
Phonic Friends



“o o o ...  
orange or-  
ange”

o



SUPERSONIC  
Phonic Friends



“c c c ...  
crazy cake”

c



SUPERSONIC  
Phonic Friends



“k k k ...  
kind king”

k




SUPERSONIC  
Phonic Friends



“ck ck ck ...  
pick a  
sock”

ck

A blue sock with a white cuff at the top and a blue patch on the heel. It is positioned to the right of the large letters 'ck'.

SUPERSONIC  
Phonic Friends



“e e e ...  
excellent  
egg”

e



SUPERSONIC  
Phonic Friends



“u u u ...  
under the  
umbrella”

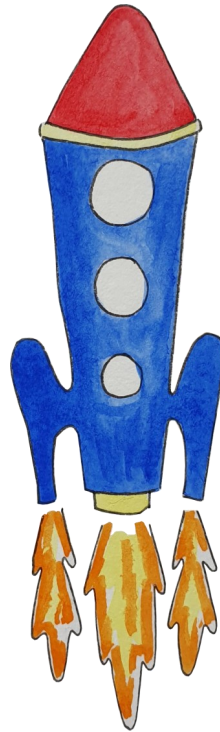
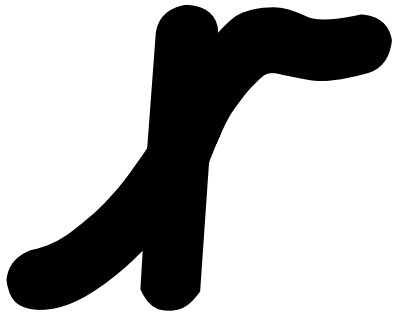
u



SUPERSONIC  
Phonic Friends



“r r r ...  
rapid rocket”



SUPERSONIC  
Phonic Friends



“h h h ...  
happy  
hedgehog”

h

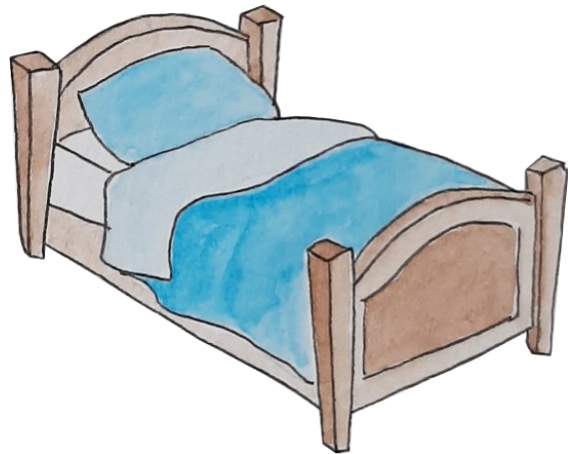


SUPERSONIC  
Phonic Friends



“b b b ...  
bouncy bed”

b



SUPERSONIC  
Phonic Friends



“f f f...  
freckled frog”

f

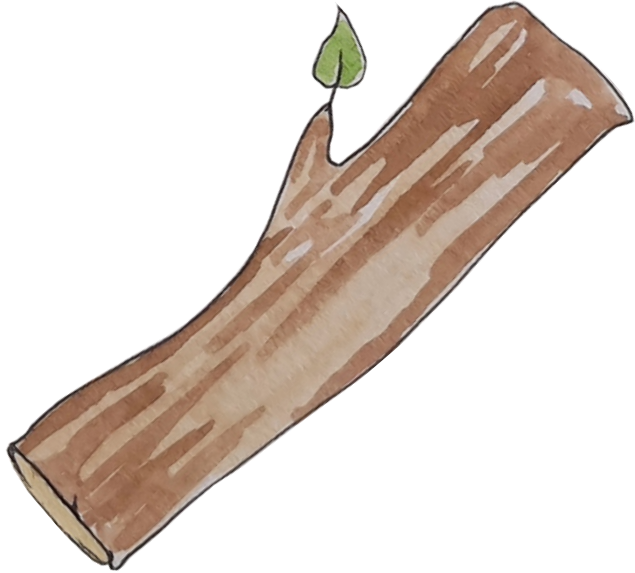


SUPERSONIC  
Phonic Friends



“l l l ...  
long log”

l



SUPERSONIC  
Phonic Friends



“ll ll ll ...  
call the  
bell”

ll



SUPERSONIC  
Phonic Friends



“ff ff ff ...  
huff and  
puff”

ff

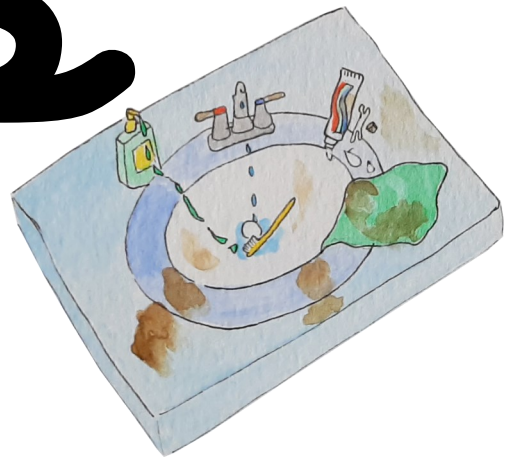


SUPERSONIC  
Phonic Friends



“s s s s s s ...  
a f u s s and a  
m e s s”

s s



SUPERSONIC  
Phonic Friends