



Year One Phonics Talk

TUESDAY 21ST MARCH

Session Format

Overview of the Supersonic Phonics Friend Scheme

The Phonics Screening Test

Key areas you can support your son/daughter with at home

Q&A

Useful Terminology

- **Phonemes** – The smallest unit of sounds within the English Language. There are 44 in total and they are used to form words.
- These sounds are represented by graphemes (letters).

Short and long vowel sounds:

Short vowel sounds	Long vowel sounds
a - cat, bat, ant	ai - paid, way, stay
e - bed, red	ee - bee, heat, feet
i - big, sit	ie - sky, high
o - dog, log	oe - bow, roe
u - put, book	ue - cue, moon

Other vowel sounds:

Vowel phonemes	Examples
ar	car, far, star
er/ir/ur	fern, bird, turn
or	born, core
ow/ou	now, cow
oy/oi	toy, joy
eer/ear	hear, fear, deer
air, ere	stair, chair, there
our	four, your
schwa (ə)	balloon, bottom, family

Consonant phonemes	Examples
b	box, black
c	cup, cake
ch	chop, change
d	day, dog
f	fast, feet
g	get, gap
h	hit, horse
j	jar, June

j	jar, June
l	long, left
m	met, mat
n	not, next
p	part, post
r	rat, rest
s	seat, soft
sh	ship, shift

t	tip, test
th	thin
th	these, those
v	vest, vote
w	we, wore
y	yet, your
z	zoo, zip
ng	ring, sing
ge	collage



Useful Terminology

- **Digraphs** – Two letters that make one sound.
- **Trigraphs** – Three letters that make one sound.
- **Split Digraph** – A digraph which is split by a constant e.g. home.
- **Spelling for the sound** – When we use letter names to explain how to spell the sound.



Useful Terminology

-
- **Alternative Pronunciations** – When a grapheme, digraph or trigraph can make an alternative sound e.g. /i/ as in **fi**g and /ie/ as in **fi**nd or /ear/ as in **he**ar or **pe**ar.

 - **Alternative Spellings** – When a sound can be shown with various combinations of letters/spellings e.g. /ee/, /ea/, /e-e/, /ey/ and /y/ all make the same sound.



Useful Terminology

-
- **Tricky Words** – Words that cannot be sounded out and need to be learnt by their letter names.
 - **Common Exception Words** – Words where the usual spelling rule(s) do not apply. Common words containing unusual grapheme phoneme correspondences.
 - **Polysyllabic Words** – Words which have two or more syllables e.g. Children, melting.
 - **Compound Words** – A word made up of two or more words e.g. lunchbox, snowflake



Supersonic Phonic Friends Scheme

Listen with Len





A super segment and a brilliant blend



....helps us to hear the word at the end!



See it with Sam



Menu

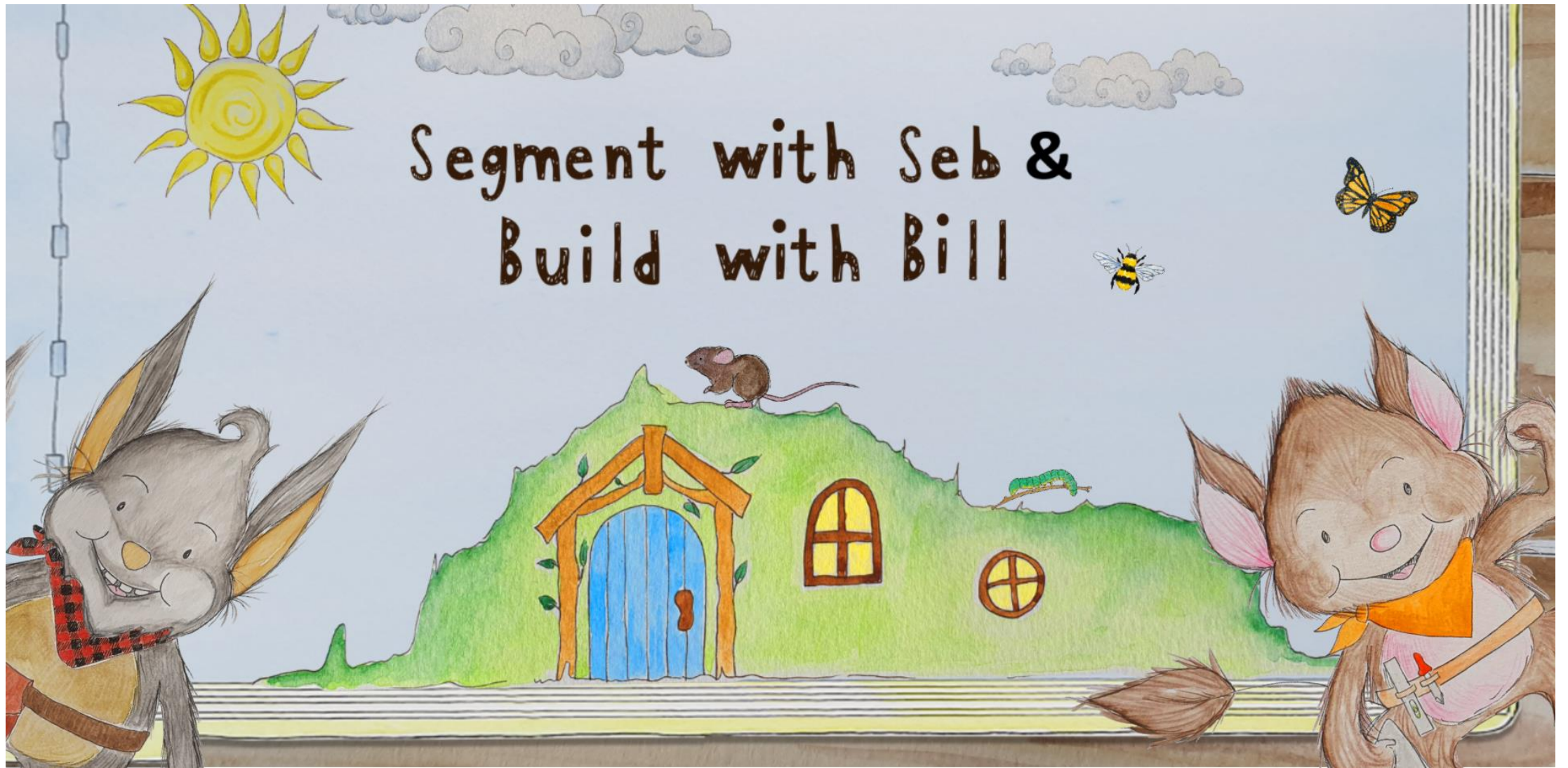
Sounds the same ~ Looks different

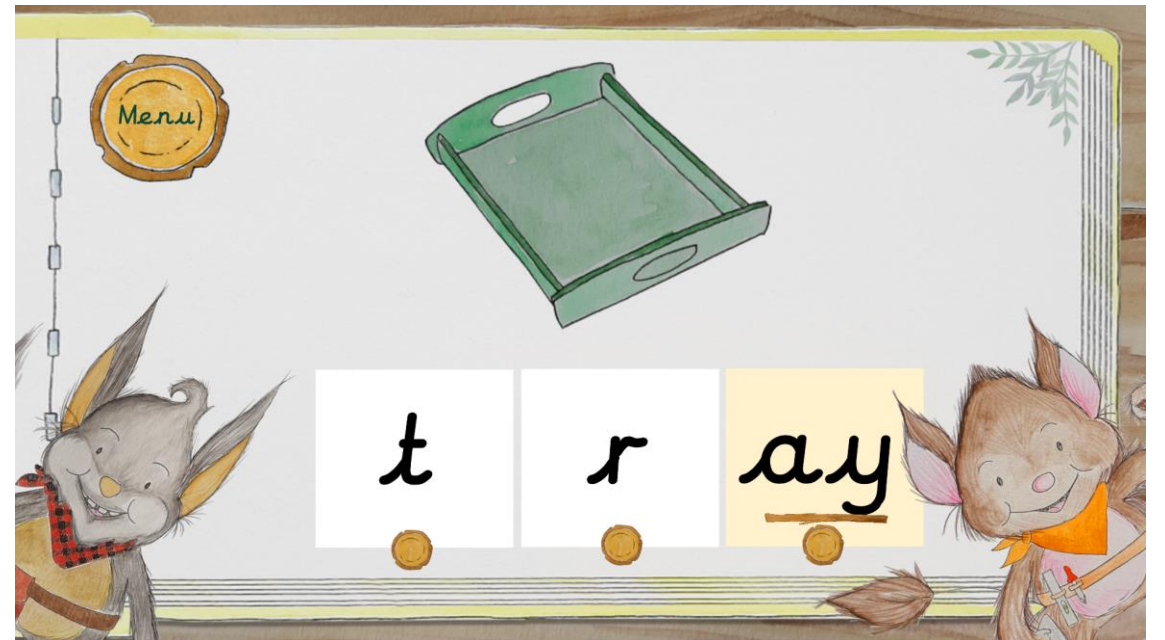
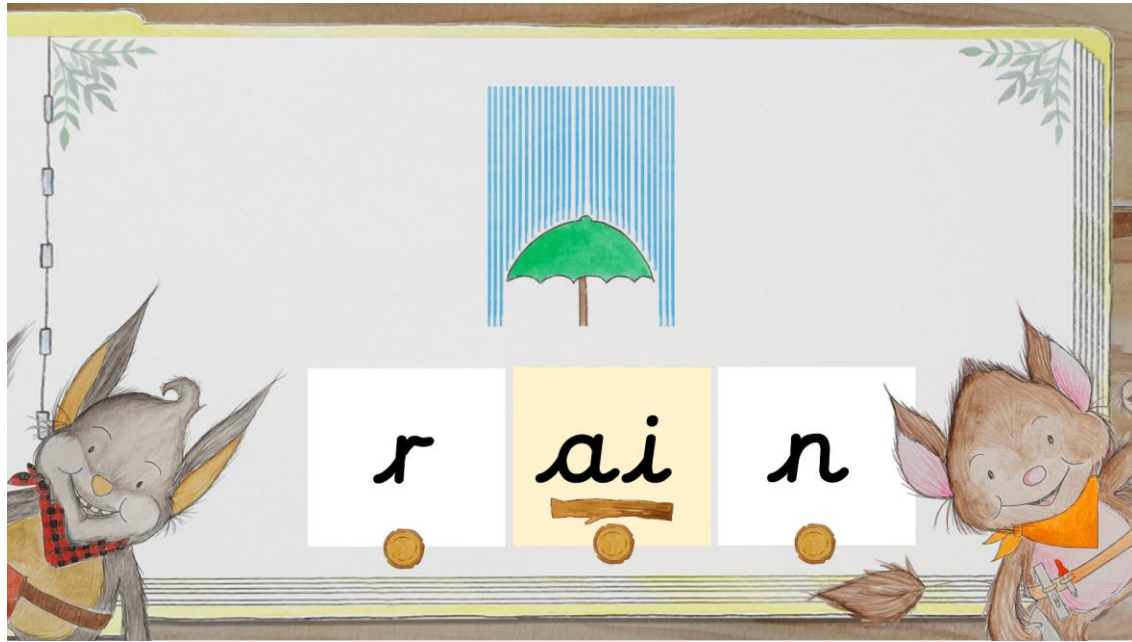


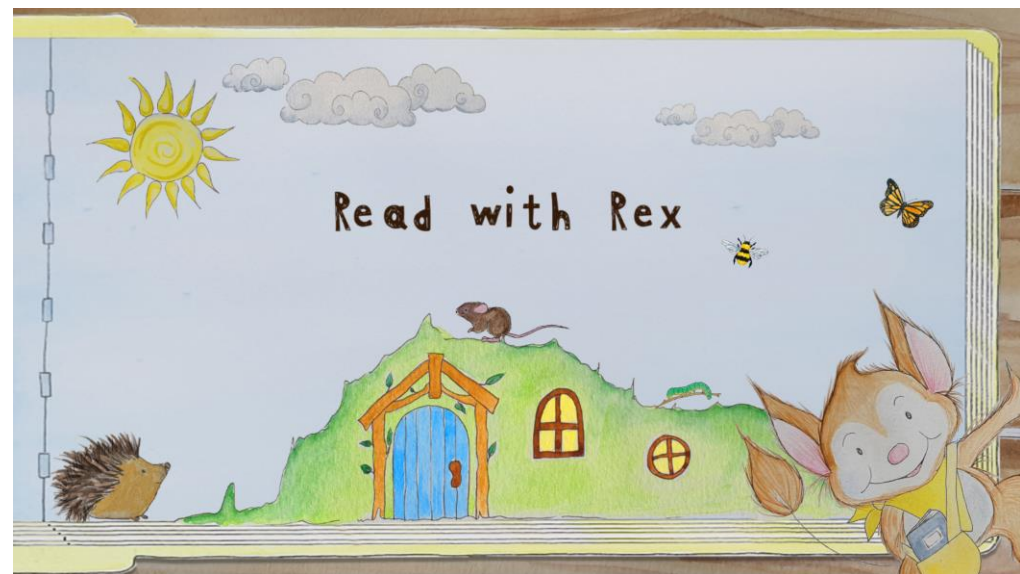
ai ay



Segment with Seb &
Build with Bill









play



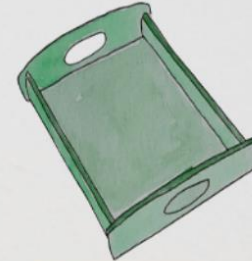
paint



train



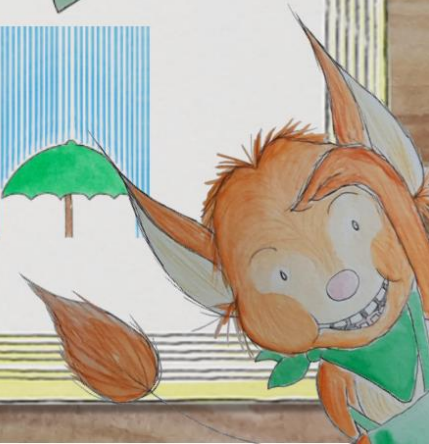
tray



clay



rain





Ben and Bill *stay* and
play in the *rain* and looked
for the *train*.



clay

pray

spail

trail

nray

glay





I the to no go into
he she me be we
has his off as is us
was you they all are my her
said have like do come some
little so one what when were
there then them
that this





The Phonics Screening Check

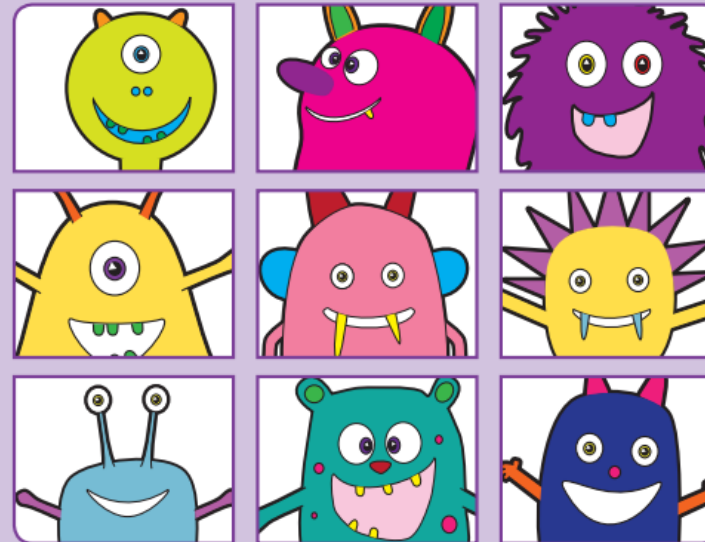
This year the check
will take place in
the week
commencing
Monday 12th June.

2017 national curriculum assessments

Key stage 1

Phonics screening check

Pupils' materials



Practice sheet: Real words

in

at

beg

sum

Practice sheet: Pseudo-words

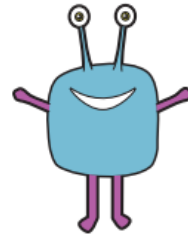
ot



vap



osk



ect



* These link to our Nonsense Nan Words.



2017

Phonics

Screening check: answer sheet

First name	
Last name	

Screening check responses: Please tick the appropriate box for each word. The use of the comment box is optional.

Section 1			
Word	Correct	Incorrect	Comment
dat			
cag			
rin			
ept			
jash			
quib			
coid			
quass			
glog			
blard			
disp			
murbs			
chum			
kick			
reef			
short			
blot			
greet			
dust			
parks			

Section 2			
Word	Correct	Incorrect	Comment
tay			
sloam			
zued			
meve			
clend			
braits			
scrug			
splue			
high			
feast			
goal			
shape			
trunk			
groups			
straw			
scribe			
model			
person			
chapter			
reptiles			

Total correct

Section 1

Pseudo-word	Acceptable pronunciations	Phonemic representation
dat	This item uses the 'd' from 'dig' and rhymes with 'sat'.	/dæt/
cag	This item uses the 'c' from 'cot' and rhymes with 'sag'.	/kæg/
rin	This item uses the 'r' from 'rod' and rhymes with 'tin'.	/rɪn/
ept	This item combines the 'e' from 'ebb' and the 'pt' from 'apt'.	/ept/
jash	This item uses the 'j' from 'just' and rhymes with 'dash'.	/dʒæʃ/
quib	This item uses the 'qu' from 'quit' and rhymes with 'glib'.	/kwɪb/
coid	This item uses the 'c' from 'cart' and rhymes with 'void'.	/kɔɪd/
quass	This item uses the 'qu' from 'quick' and rhymes with 'mass'. All regional pronunciations of the 'a' are acceptable.	/kwæs/
glog	This item uses the 'gl' from 'glue' and rhymes with 'frog'.	/glɒg/
blard	This item uses the 'bl' from 'bloom' and rhymes with 'guard'.	/blɑːd/ or /bloːrd/
disp	This item uses the 'd' from 'defy' and rhymes with 'lisp'.	/dɪsp/
murbs	This item uses the 'm' from 'marks' and rhymes with 'curbs'.	/mɜːbs/ or /mɜːrbs/

Section 2

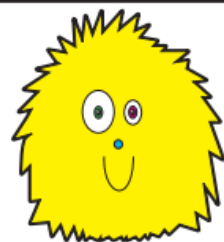
Pseudo-word	Acceptable pronunciations	Phonemic representation
tay	This item uses the 't' from 'tie' and rhymes with 'pay'.	/teɪ/
sloam	This item uses the 'sl' from 'slime' and rhymes with 'roam'.	/sleʊm/
zued	This item uses the 'z' from 'zoom' and rhymes with 'cued'.	/zuːd/
meve	This item uses the 'm' from 'more' and rhymes with 'Steve'.	/miːv/
clend	This item uses the 'cl' from 'clamp' and rhymes with 'spend'.	/klend/
braits	This item uses the 'br' from 'brick' and rhymes with 'straits'.	/brɛɪts/
scrug	This item uses the 'scr' from 'scrap' and rhymes with 'plug'. All regional pronunciations of the 'u' are acceptable.	/skrʌg/
splue	This item uses the 'spl' from 'split' and rhymes with 'glue'.	/spluː/

Section 1

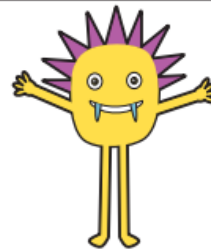
jash



quib



coid



quass



Section 2

high

feast

goal

shape

Important elements concerning the screening test.

There is no time limit

The children will complete the test in a familiar environment

It will be conducted by the class teacher

Breaks are allowed if required

Children have to confidently segment and blend the words without prompts



Sounds that tend to be the most difficult for the children to remember are:

- The split digraphs a-e, e-e, o-e, i-e, u-e.
- /ew/ as in few or blew.
- /au/ as in haunt and /aw/ as in saw.
- /ar/ as in car.
- /ou/ as in cloud.
- /ir/ as in bird and /er/ as in her.
- /ue/ as in glue.



Support at Home



Reading

- Daily reading at home will support your son/daughter to become fluent and accurate readers.
- Every Friday they will bring home the Phonics book they have been practising within school.
- We also regularly ask them to select a Genre book as part of their 'love for reading'.



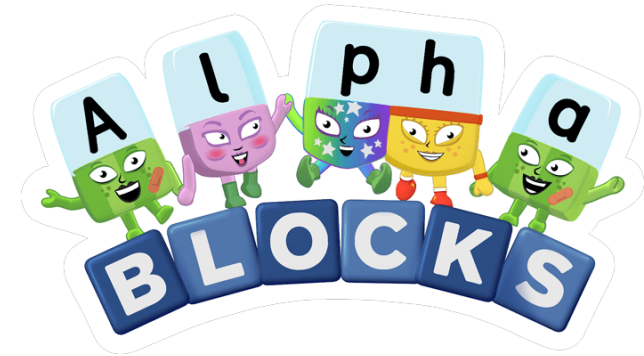
Once, there was a bear and a hare next to blue armchair.



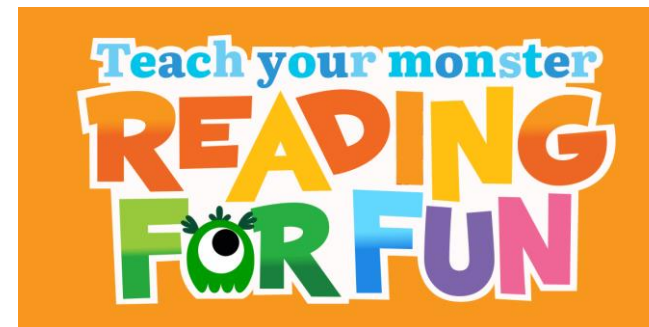
Apps and Websites

- Children will receive a log-in for Teach Your Monster to Read from school.

- Alphablocks – BBC iPlayer and CBeebies.



- Mr. Thorne Does Phonics – YouTube Channel.



Supersonic Phonic Friends - Year 1

Lilleshall Primary School are very pleased to have chosen the Supersonic Phonic Friends DFE validated systematic, synthetic scheme. We believe that children will achieve their best outcomes by following this scheme and will learn to read and write accurately, fluently and with automaticity.

The options below give you more information and resources to help you support your child in learning to read and write at home.

**As always if you have any questions or require further information, please do not hesitate to contact Mrs. Phillips on the class email:
lilleshall.year1@taw.org.uk**

Thank you for your continued support.



**Pronunciation
of Pure Sounds**



**Weekly Parent
Newsletters**



Spelling Mats



Flashcards



**Tricky Word
Mats**

Holiday Packs

- Phonics Packs will be provided for the Easter and May Holidays and will include a range of reading and writing activities.
- Examples:



'Pinchy Pegs' Challenge



'Build, Read, Write Game'

Thank you for Listening.

Do you have any Questions?